

IV

NZ 40/26 NEW ZEALAND - South Island - North Coast - Picton Harbour. Works in Progress

1. Chart NZ 6154 (plan, Picton Wharves) [023/25]

Insert the accompanying block, centred on: 41°17'.059S., 174°00'.342E.
the accompanying note, **WORKS IN PROGRESS** below chart title

2. Chart NZ 6154 (plan, Picton Harbour) [023/25]

Insert legend, *Works in Progress (see Note)* 41°17'.053S., 174°00'.357E.

Marlborough District Council
HITS 6154/110

To accompany New Zealand Notices to Mariners No. 40/26
NZ 6154

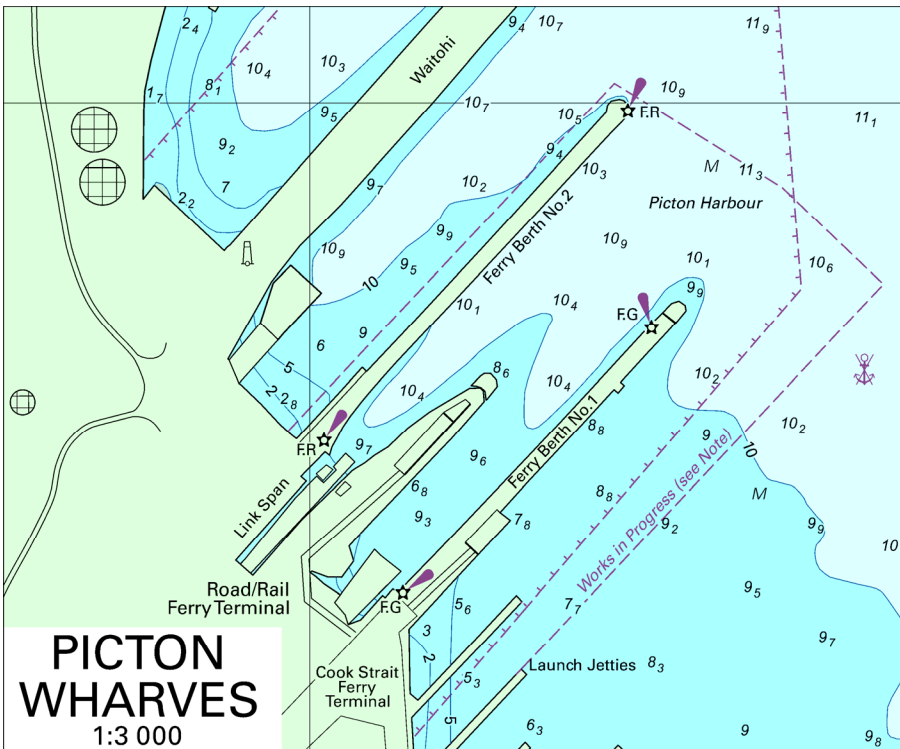


Image Size (mm) 98.6 x 120.1

NZ 6154

WORKS IN PROGRESS
Construction work is taking place for the reconstruction of the Picton wharves. Mariners are requested to contact Picton Harbour Radio on VHF Channel 18 for updates and details.

Image Size (mm) 13.7 x 52.6