

IV

NZ 84/24 NEW ZEALAND - North Island - East Coast - Firth of Thames. Marine Farms and Lit Buoys

1. Chart NZ 532 [060/24]

Insert the accompanying block showing updates to marine farms and lit buoys, centred on: 36°51'.70S., 175°16'.08E.



2. Chart NZ 533 [060/24]

Insert the accompanying block showing updates to marine farms and lit buoys, centred on: 36°51'.75S., 175°16'.09E.

3. Chart NZ 5327 [050/22]

Insert the accompanying block showing updates to marine farms and lit buoys, centred on: 36°51'.69S., 175°16'.23E.

4. Chart NZ 5324 [060/24]

Replace  VQ, with,  VQ(3)5s, centred on: 36°51'.42S., 175°16'.02E.
 BY BYB

Ngāi Tai Oldham Limited
 HITS 533/205

To accompany New Zealand Notices to Mariners No. 84/24

NZ 532

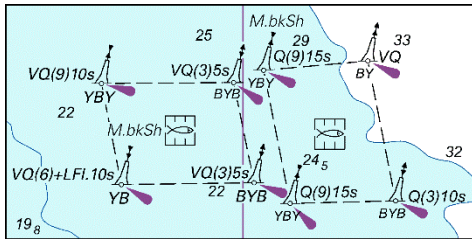


Image Size (mm) 31.27 x 62.18

To accompany New Zealand Notices to Mariners No. 84/24

NZ 533

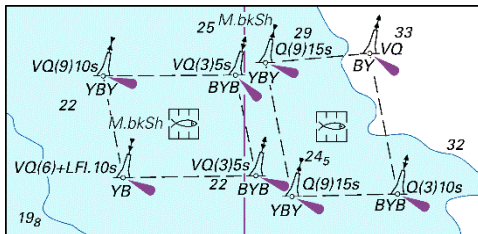


Image Size (mm) 30.52 x 63.13

NZ 5327

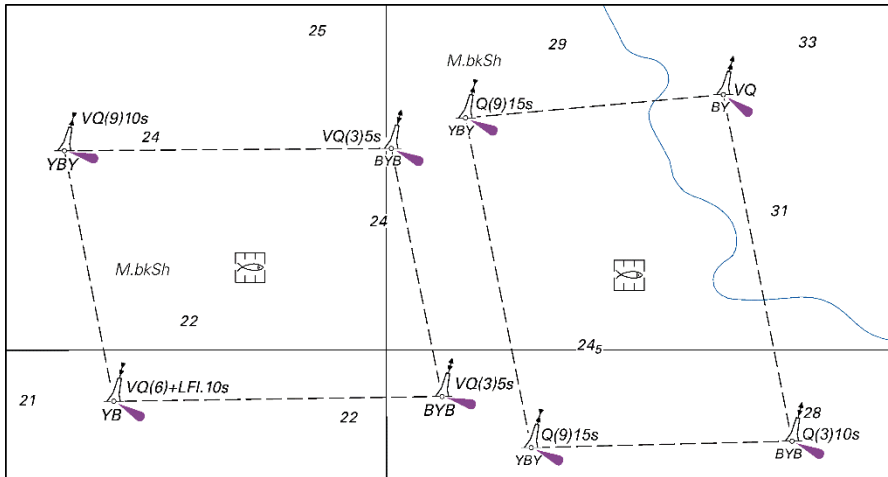


Image Size (mm) 62.74 x 117.53