

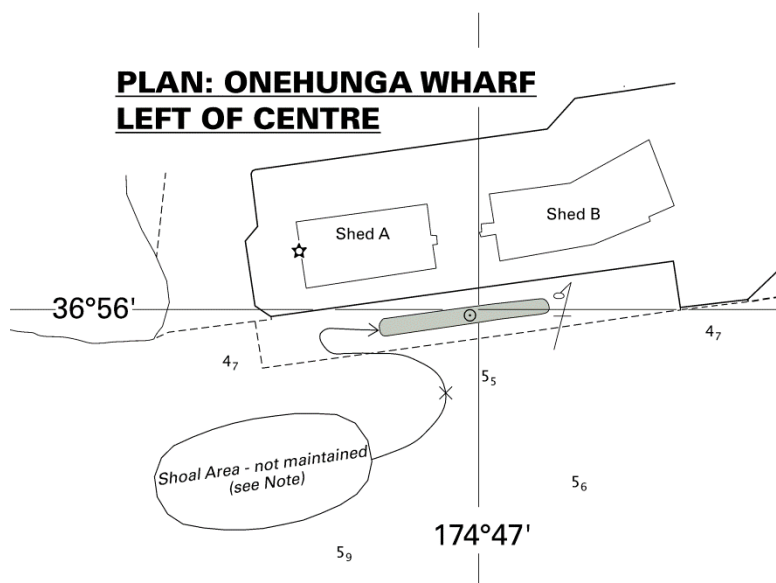
NZ 88/14 NEW ZEALAND – North Island – West Coast – Onehunga Wharf – Berth Depths.

Chart NZ 4315 (plan, Onehunga Wharf) [99/12]

Replace Legend, 'Dredged to 5m (2008)' with 'Shoal Area - not maintained (see Note)', centred on:

36° 56'.001S., 174° 46'.998E.

Ports of Auckland
NI 67/2014



<i>Issued as a guide to chart correction.</i>		<i>Use in conjunction with the appropriate NZ Notice to Mariners.</i>
LAST CORRECTION	NZ NTM No.	CHART No.
NZ 99/12	NZ 88/14	NZ 4315